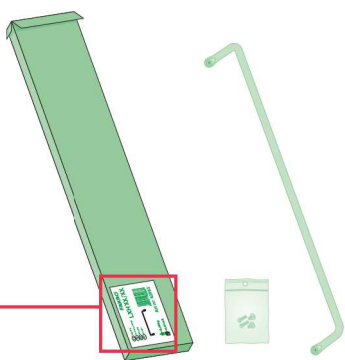


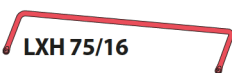
# LXH



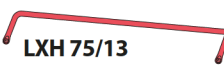
## LXH



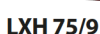
x2  
 25 mm x2



x2



x2  
 25 mm x2  
 28 mm x2



x2  
 28 mm x2

### LXH 50/13

LWS 4s, LWK 4s, LWT 4s, LTK Energy 4s, LWF 60 4s, LWE Energy Efficient 4s, LWT Super Thermo 4s



### LXH 75/13

LWP, LWT, LWS, LWK, LTK Energy, LWF 60, LWZ Plus, LWE Energy Efficient, LWT Super Thermo



### LXH 75/16

LDK



### LXH 75/13

LMS, LMK



### LXH 75/13

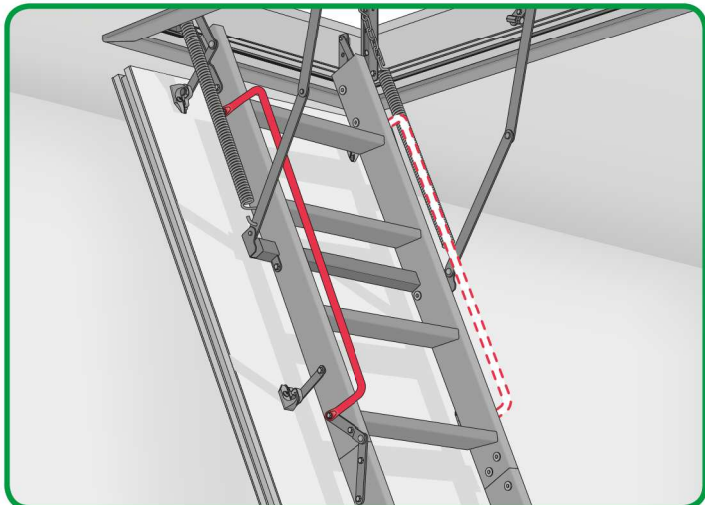
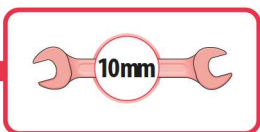
LMF 60 (280 cm, 305 cm)



### LXH 75/9

LME Energy Efficient, LMT Super Thermo





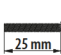
LW\_



LM\_



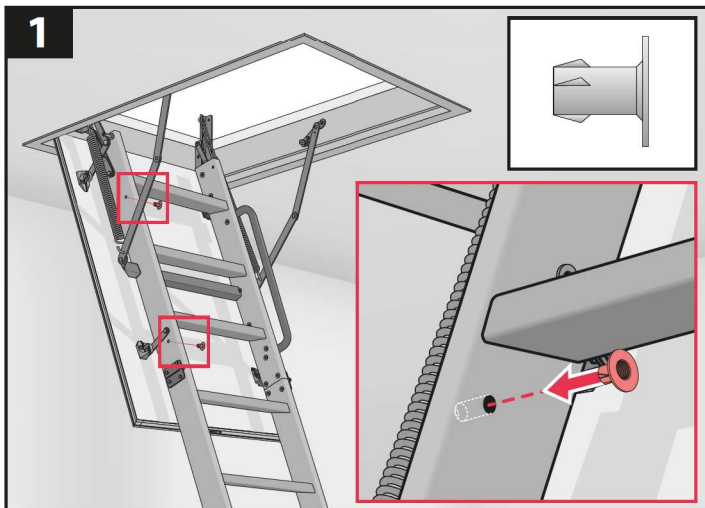
**LXH 50/13**

x2  x2

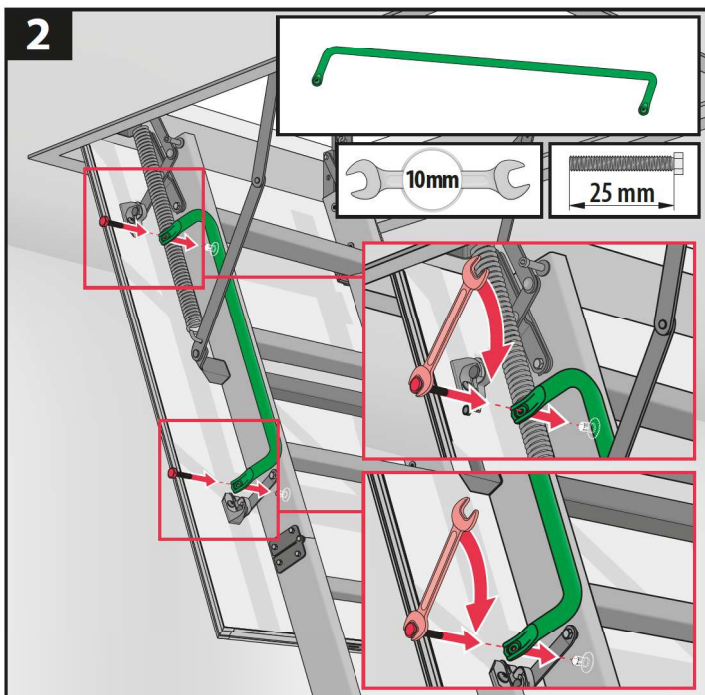


LWS 4s, LWK 4s, LWT 4s, LTK Energy 4s, LWF 60 4s,  
LWE Energy Efficient 4s, LWT Super Thermo 4s

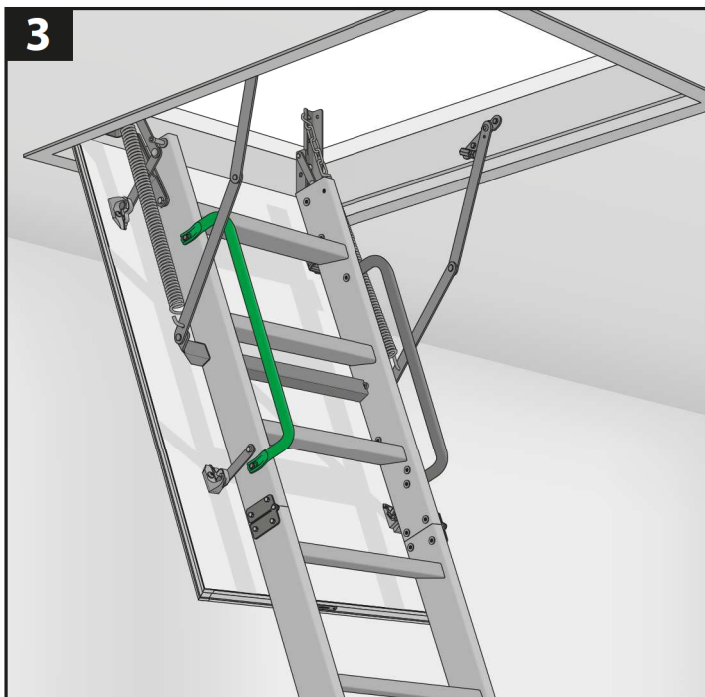
**1**



**2**



**3**



**LXH 75/13**

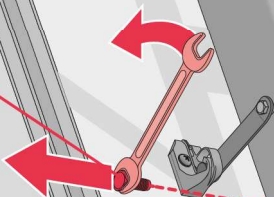
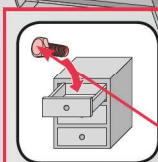
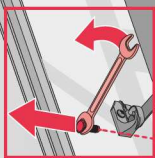
x1

25 mm x1

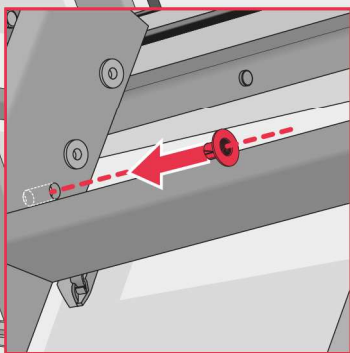
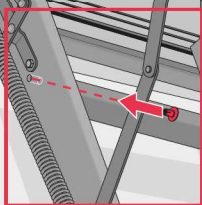
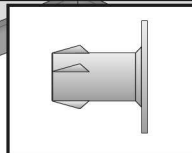


LWP, LWT, LWS, LWK, LTK Energy, LWF 60,  
LWZ Plus, LWE Energy Efficient, LWT Super Thermo

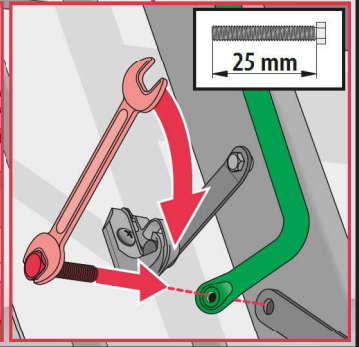
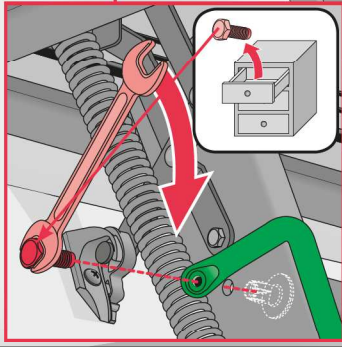
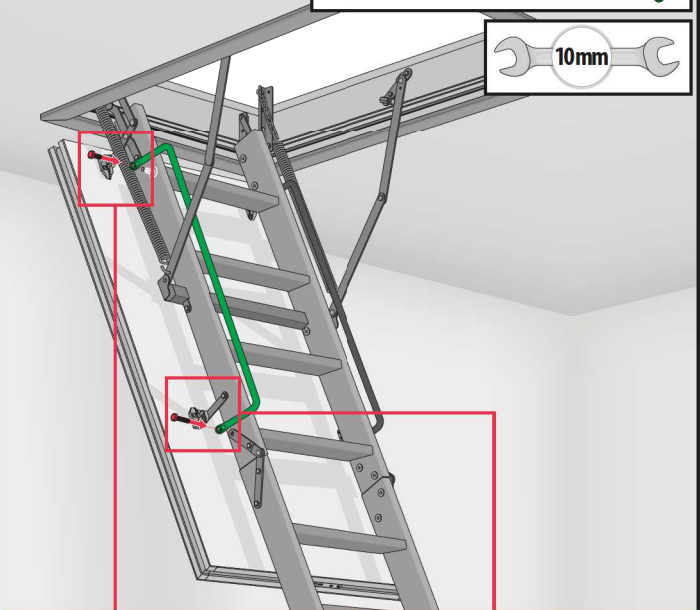
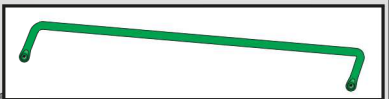
**1**



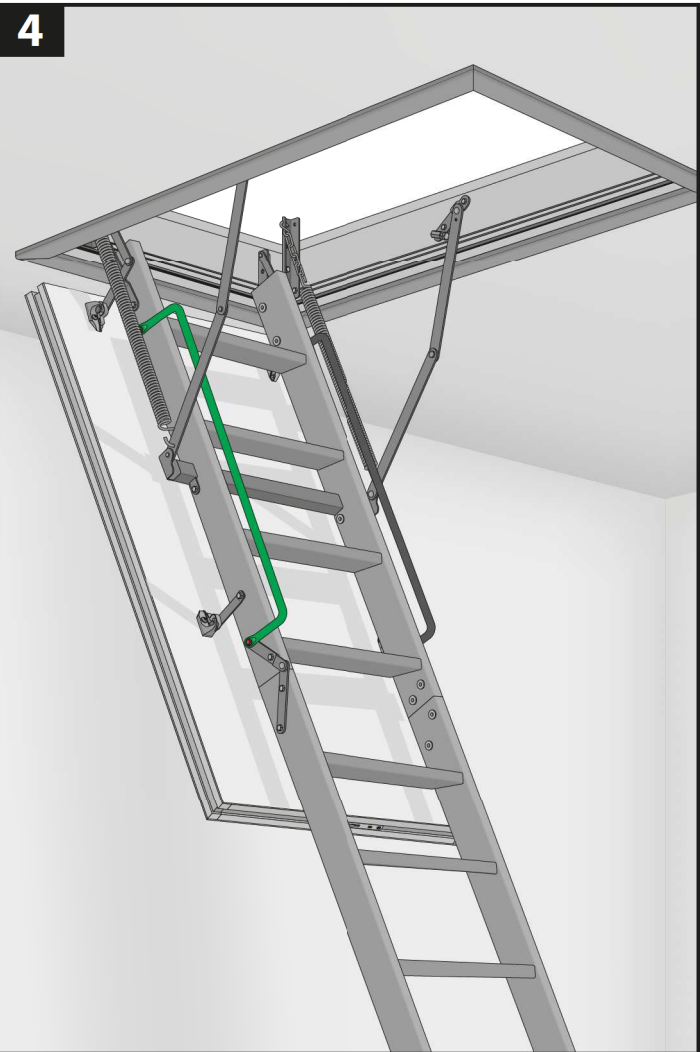
**2**



3



4



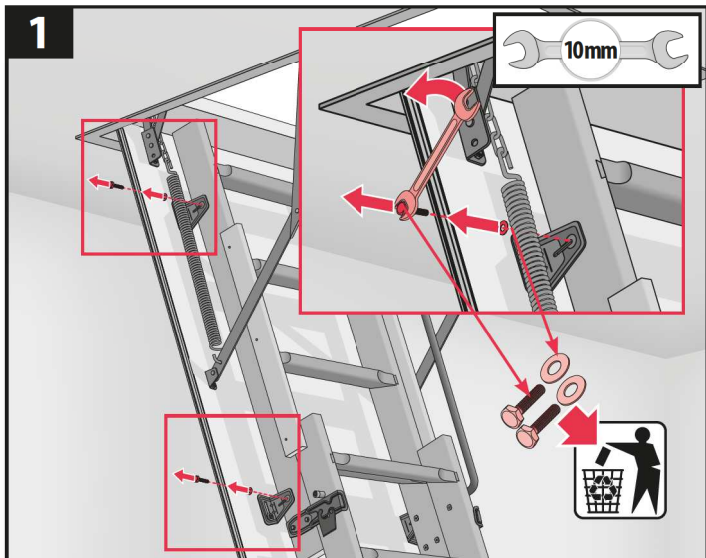
LXH 75/16

25 mm x2

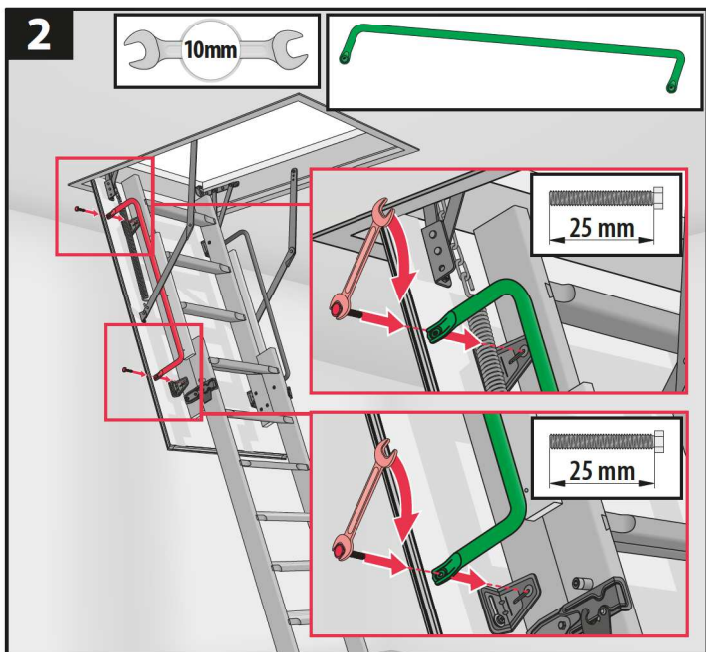


LDK

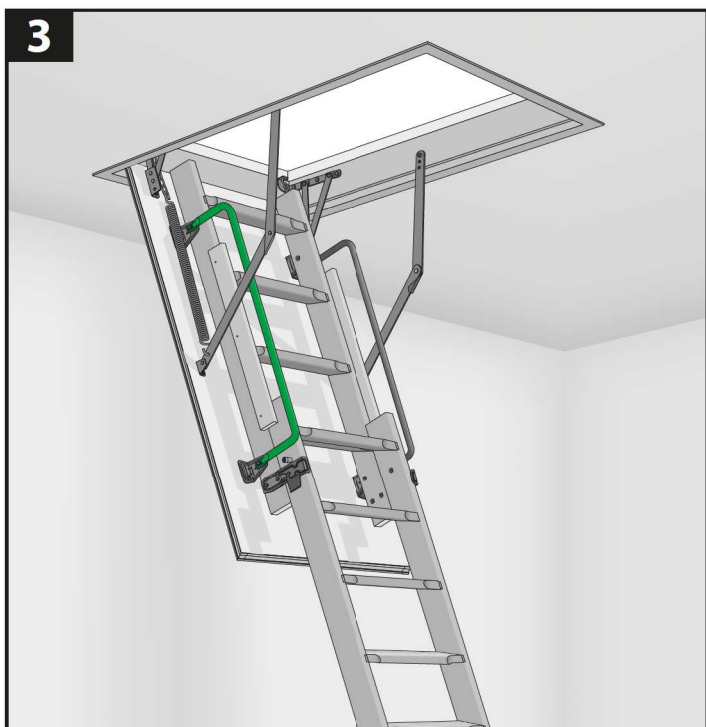
1



2



3

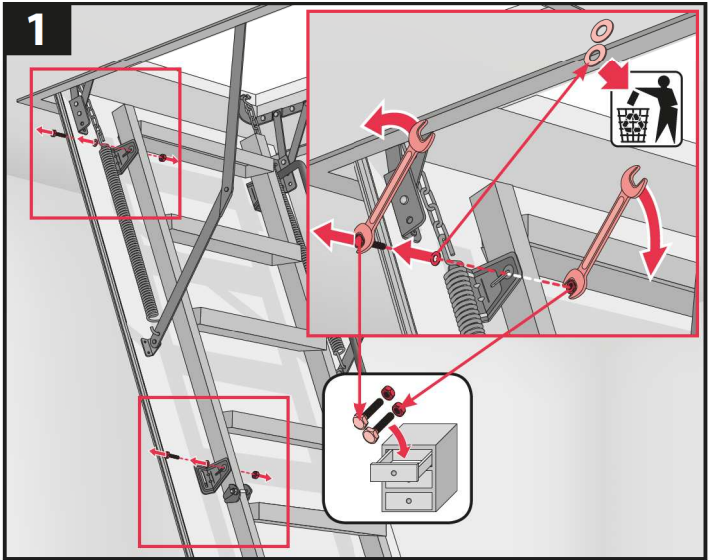


LXH 75/13

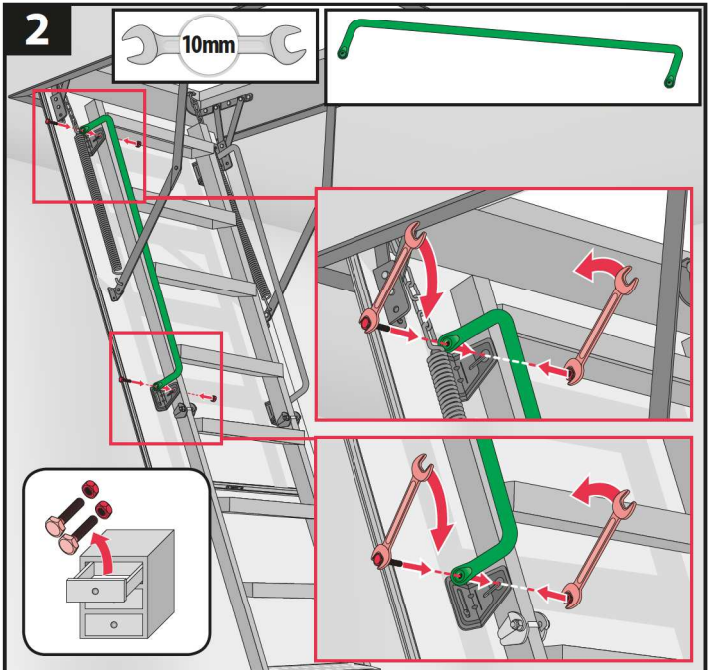


LMS, LMK

1



2



3



**LXH 75/13**

x2

28 mm x2

**LMF 60 (280 cm, 305 cm)****LXH 75/9**

x2

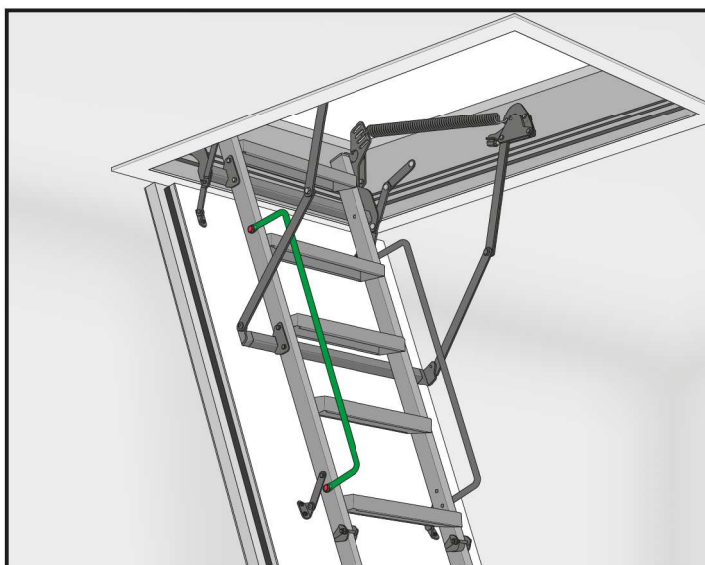
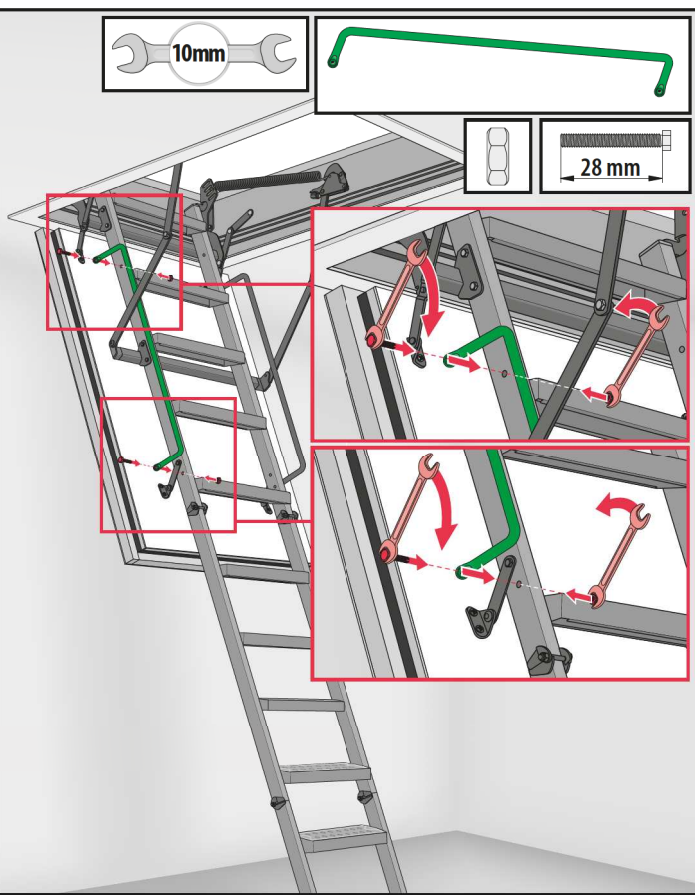
28 mm x2

**LME Energy Efficient, LMT Super Thermo**

10mm



28 mm



- |  |   |
|--|---|
| <p><b>BG</b> Производител и Продавач не носят отговорност за неспазване на съответните закони, строителни норми и изисквания за безопасност от потребителя на продукта, архитекта, монтажника или собственика на сградата.</p> <p><b>CZ</b> Výrobce ani prodávce nenesou žádnou odpovědnost za nedodržení příslušných platných zákonů, stavebních předpisů a bezpečnostních požadavků uživatelem výrobku, architektem, montážníkem nebo vlastníkem budovy.</p> <p><b>DE</b> Hersteller und Verkäufer übernehmen keine Haftung für Nichtbeachtung entsprechender Rechts- und Bauvorschriften sowie Sicherheitsanforderungen seitens Produktbenutzers, Architekten, Monteure oder Gebäudebesitzers.</p> <p><b>EE</b> Tootja ja jaemüüja ei vastuta toote kasutaja, arhitekti, paigaldaja või hoone omaniku poolt kehtivate seaduste, määruste ja ohutusnõuete mittejärgimise eest.</p> <p><b>ES</b> El fabricante y el vendedor no tienen ninguna responsabilidad por el incumplimiento de la ley vigente, normas de construcción y exigencias de seguridad por parte del usuario del producto, arquitecto, instalador o el propietario del edificio.</p> <p><b>FR</b> Le fabricant et le revendeur ne prend aucune responsabilité de ne pas respecter les lois applicables, les règlements sur les bâtiments et les exigences de sécurité par l'utilisateur du produit, l'architecte, l'installateur ou le propriétaire du bâtiment.</p> <p><b>GB</b> Manufacturer and Seller shall bear no liability for failure to comply with the applicable laws, building codes and safety requirements by the user of the product, architect, fitter or owner of the building.</p> <p><b>HU</b> A Gyártó és a Forgalmazó nem vállal semmiféle felelősséget a vonatkozó törvényi, építési és biztonsági előírások, termékelhasználói, építész, beépítőmester vagy épülettulajdonos általi be nem tartásáért.</p> <p><b>IT</b> Il Produttore e il Rivenditore non potranno essere ritenuti responsabili per il mancato rispetto, da parte dell'utente del prodotto, del progettista, dell'installatore o del proprietario dell'edificio, delle leggi vigenti, nonché dei regolamenti edilizi e di quelli relativi alla sicurezza.</p> | <p><b>LT</b> Rūbotojas ir pardavėjas neįžemas atbildimo par likumu, noteikimų ir drošības prasbiu neįveikimu no produkta lietojta, architekta, uždavitaja vai ekas ipašnieka puses.</p> <p><b>LV</b> Ģarntojs ir pardavējas neprisima jokios atsakomybes uz tai, kad ģarmino naudotojas, arhitekts, montuotojas ar pastaro savinikas neslialko galiojanciu istatymu, taisykliu ir saugos reikalavimu.</p> <p><b>NL</b> De fabrikant en verkoper zijn niet aansprakelijk voor gevolgen bij het niet opvolgen van toepasselijke wetten, bouwbesluiten en veiligheidsvoorschriften door de gebruiker van het product, de architect, de installateur of de eigenaar van het gebouw.</p> <p><b>PL</b> Producent i Sprzedawca nie ponosi zadnej odpowiedzialnosci za nieprzebrzeganie stosownych przepisow prawa, przepisow budowlanych i wymogow bezpieczenstwa przez uzytkownika produktu, architekta, montazyste lub wlasciciela budynku.</p> <p><b>PT</b> O fabricante e o vendedor nāo tem nenhuma responsabilidade pelo o nāo cumprimento da lei, cōdigos de construçāo e as exigēncias de segurança por parte do usuārio do produto, arquiteto, instalador ou proprietārio do edifício.</p> <p><b>RO</b> Nici producătorul, nici distribuitorul nu își vor asuma niciun fel de răspundere pentru nerespectarea legilor în vigoare, a legilor din domeniul construcțiilor sau a măsurilor de siguranță impuse utilizatorilor produsului, arhitecților, montatorilor sau proprietarilor clădirii.</p> <p><b>RU</b> В случае несоблюдения архитектором, монтажником или владельцем здания строительных правил и норм безопасности ответственность с производителя и продавца снимается.</p> <p><b>SK</b> Výrobca a predávca nenesú žiadnu zodpovednosť za nedodržanie príslušných ustanovení zákona, stavebných predpisov a bezpečnostných požiadaviek uživateľom výrobku, architektom, montérom alebo majiteľom objektu.</p> |
|--|---|